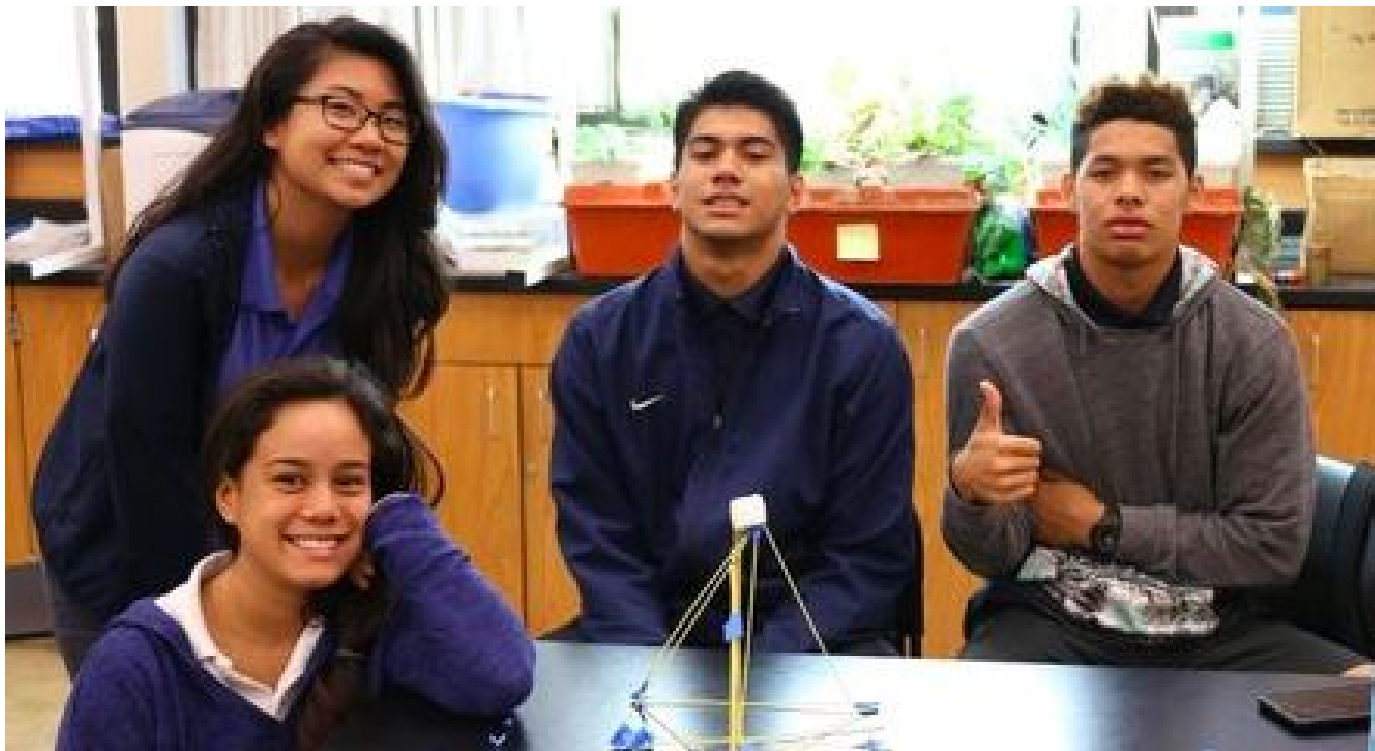




Malama Na Moku

By: Ashley Tyau, Kamehana Ruiz, Kia'i Ah
Mook Sang, & Matthew Aio

Who are we?



Weebly Website

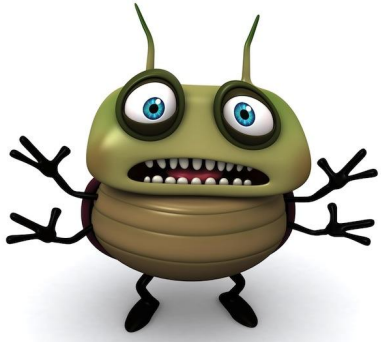
- Daily blogs
- Our Plan
- Proposal
- Calendar



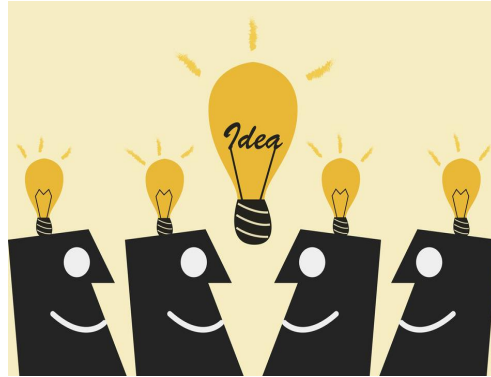
Our mission is to identify and assess different problems that we face here at Kamehameha every day. Our goal is to come up with a solution to help fix the problems that we find necessary to fix. We believe that if we conquer these tasks then we will make Kamehameha Schools a much better place for all.

<http://malamanamoku.weebly.com>

Process:



BUG LIST



BRAIN STORM

found it

IDENTIFIED THE
PROBLEM



START THE
WORK

Why?

- Water wasted
- New ways to water plants
- Innovative
- Sprinkler systems not being as effective

The Problem

The problem that we wished to fix are the sprinkler systems on campus. Our campus is trying to conserve water and we've come up with a solution in doing so.

The hypothesis:

We think that if we add a water system to the Performing Arts garden, it will provide our campus with more of our Native Hawaiian plants, while conserving as much water as possible.

Communication

With Head of Grounds

- Old vs. New Sprinklers
 - Time zones
 - Amount of sprinklers on HS campus
 - Locations
 - Wasted water? Water sprinkler problems?
 - How we can help
-

Research

- Speak to grounds men
- Online research: Sprinkler alternatives & tools
- Data:
 - # of Sprinklers
 - Amount of Waste
 - \$ of Water

Data

Place	Number of Sprinklers	Time Sprinkler goes off
Kaahumanu	6	9:30pm-10pm
Konia	12	9pm-10pm
Performing Arts	0	N/A
Haleakala	4	8:30-9:30pm
Girls Dorm	N/A	N/A

Changing Ideas

Planning Ahead

The Area:

- Performing Arts Garden
- Top level



Equipment

Tools needed for
experimentation

Hose (15 feet)

Hose Faucet Timer



Set Up



Did it work?





Conclusion

- Project Improvements
- How we feel about our accomplishments

We learned how
important it is to live
a more sustainable
lifestyle on campus
& how achievable it
can be

Our Legacy



Mahalo for
Listening!